

# Gallery of awesome pictures

Note: the board pads are not designed for mechanical support, it's best to use a wire size that will break before the pad will. Attaching a solid part to the pad with no other support can result in the pad ripped from the board after a crash.

## Flashing port examples

**Male 2.54cm header.**



**Female 2.54cm header.**



**Picoblade connector.**



**Solid wire (24gauge?).**



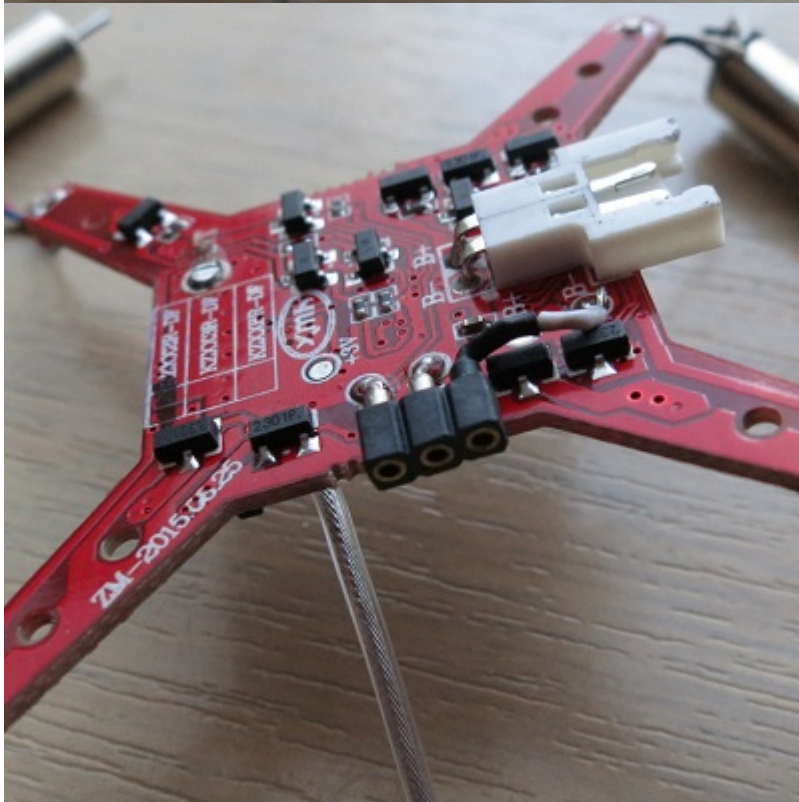
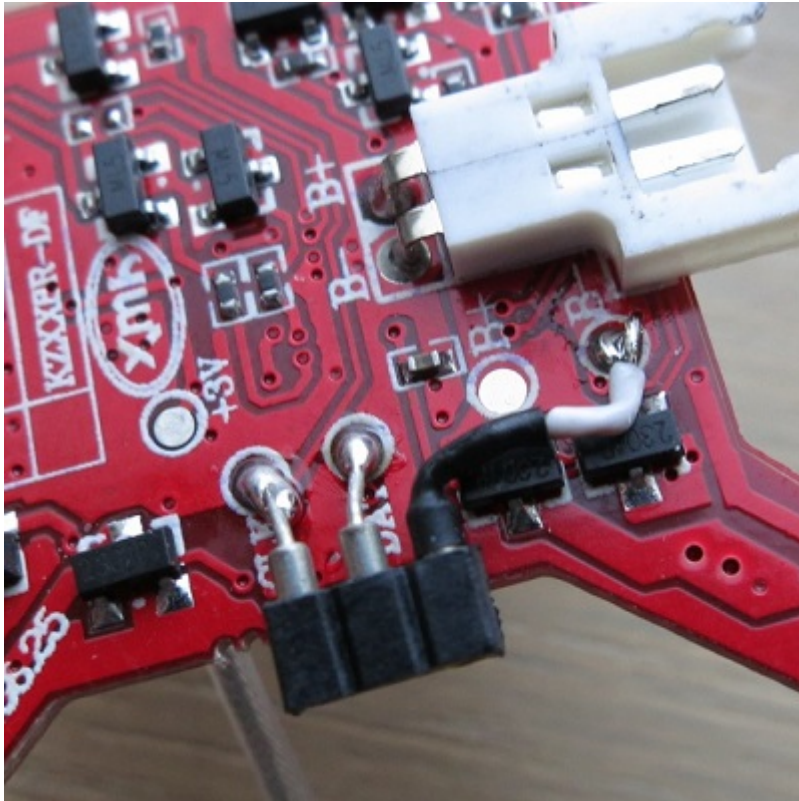
**CG023 FC with silverxxx firmware on a 110mm brushless quad**

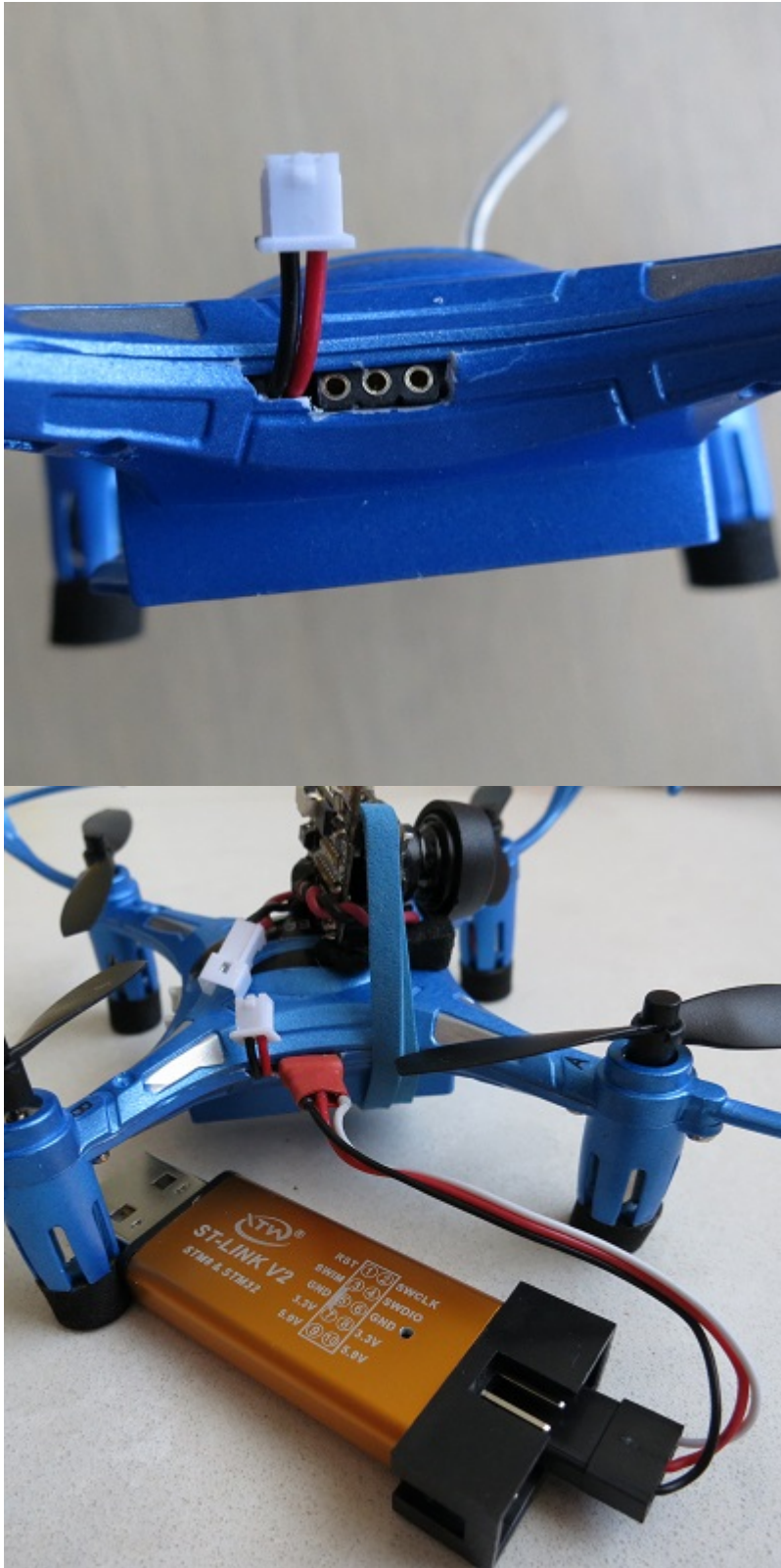


h8s-3d, using a 2mm round pin female micro connector

nothing of the connector is outside the shell, so hopefully this, and being on the side of the machine renders it "safe" from impact

the final two photos also show the power lead out for akk bs2 camera (whoopin' it up ! )





From:  
<https://sirdomsen.diskstation.me/dokuwiki/> - Silverware Wiki

Permanent link:  
<https://sirdomsen.diskstation.me/dokuwiki/doku.php?id=gallery&rev=1509328548>

Last update: **2017/10/30 02:55**

