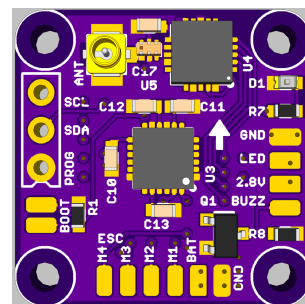
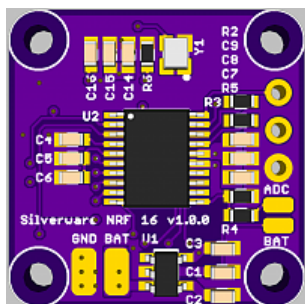


# Silverware FC



## Facts:

- 20x20mm board with 16x16mm holes
- Powerd by an STM32F030F4P6 (same as H8mini Blue board, BWHOOB B03, Eachine E011 and similar)
- MPU 6050 Gyro
- NRF24L01 Radio Chip onboard
- [S.Bus receiver supported](#)
- Directly usable for 1-3S Lipos, for >3S a BEC (e.g. from ESC) is required
- 2 Spare out
- Full Bayang telemetry support (reporting Battery voltage, rf strength) on Devo / Jumper T8SG TX , possible also for Multimoduled Frsky TX

This FC is based on an idea of **Ian444**, who is the head behind that project. The developmental history can be read in [CG023 acro thread](#)

Thanks to all that brought in their ideas, had thoughts and made this thing happen

Special Thanks to **BitViper** for the PCB design!

Schematics and Links to the (**yet untested**) board & part list can be found [here](#). Get started, (**but for now, do that on your own risk** )!

Needed [changes](#) of Bwhoop-B03 Silverware to work with SilverwareFC elaborated by **Ian444**

From:  
<http://sirdomsen.diskstation.me/dokuwiki/> - **Silverware Wiki**

Permanent link:  
<http://sirdomsen.diskstation.me/dokuwiki/doku.php?id=silverwarefc&rev=1516190605>

Last update: **2018/01/17 13:03**

