

# Gallery of awesome pictures

Note: the board pads are not designed for mechanical support, it's best to use a wire size that will break before the pad will. Attaching a solid part to the pad with no other support can result in the pad ripped from the board after a crash.

## Flashing port examples

**Male 2.54cm header.**



**Female 2.54cm header.**



**Picoblade connector.**



**Solid wire (24gauge?).**

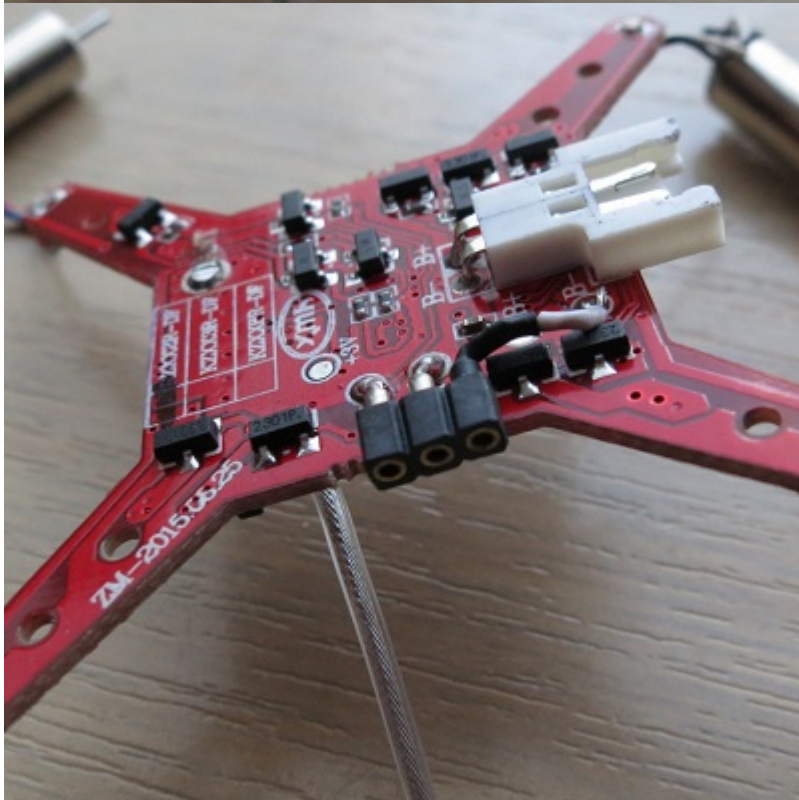
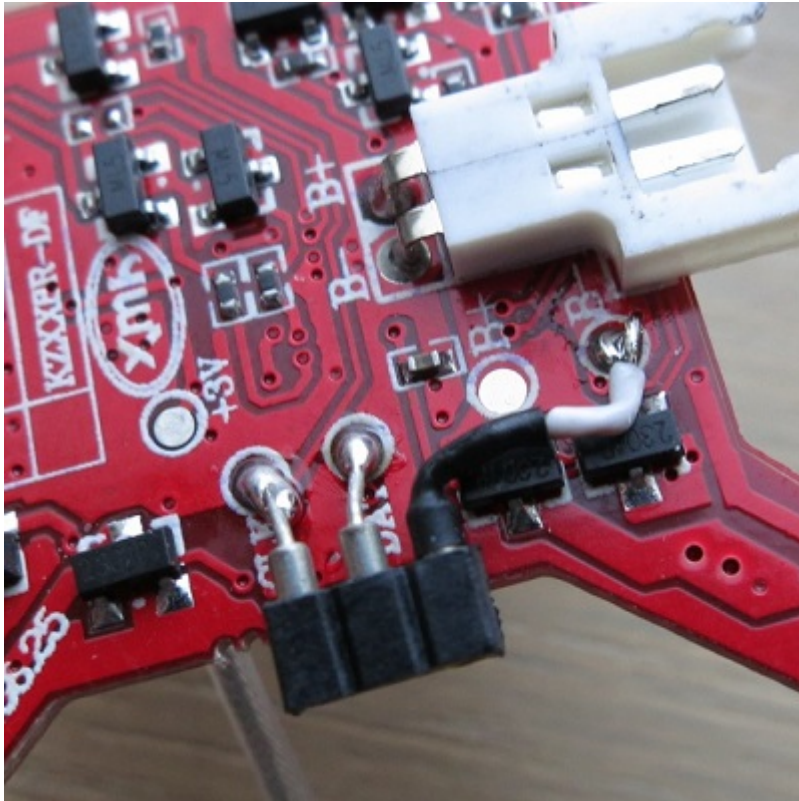


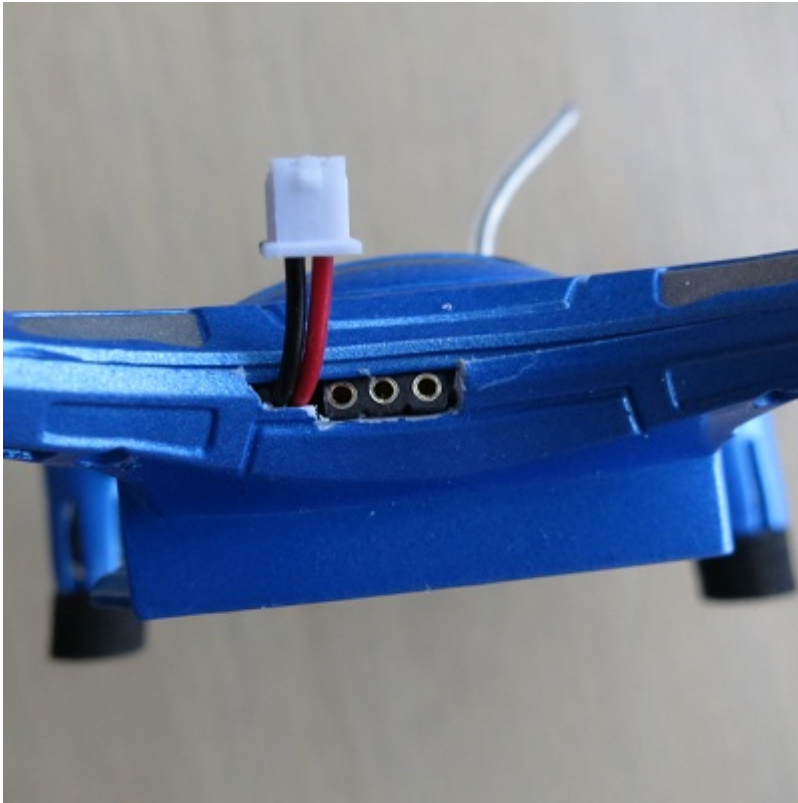
**CG023 FC with silverxxx firmware on a 110mm brushless quad**



h8s-3d, using a 2mm round pin female micro connector

the final photo also shows power lead out for akk bs2 camera (whoopin' it up ! )





From:  
<http://sirdomsen.diskstation.me/dokuwiki/> - **Silverware Wiki**

Permanent link:  
<http://sirdomsen.diskstation.me/dokuwiki/doku.php?id=gallery&rev=1509326786>

Last update: **2017/10/30 02:26**

